

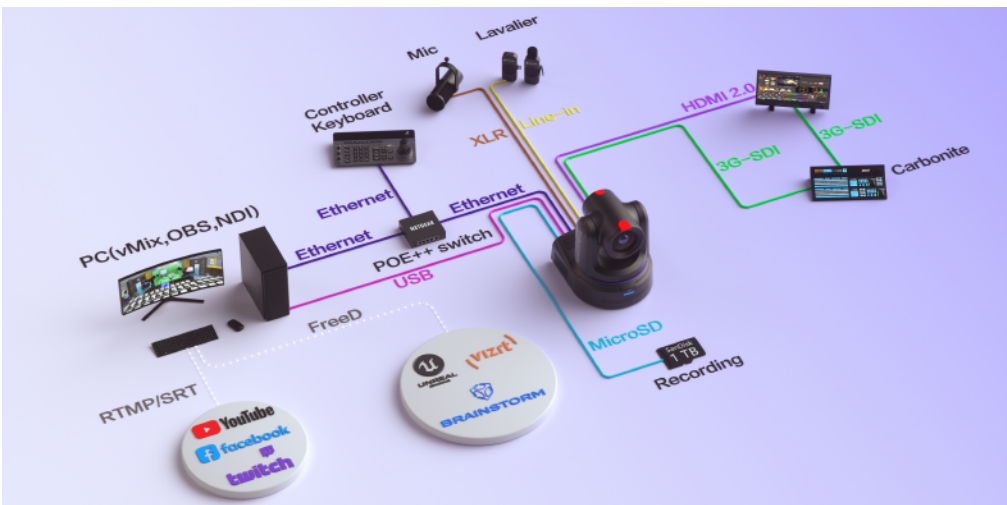


EXPLORE XE 1-Inch Sensor PTZ Camera for Broadcasters

Broadcast Level PTZ Camera Disrupts AV Industry

20X | 4K | AUTO-TRACKING
FREED | PDAF

3G-SDI/HDMI/NDI®HX3/XLR



High-Performance Sensor and Image Processor

The Explore boasts a Sony 1-inch 9MP CMOS sensor and a state-of-the-art image processor to deliver stunning ultra-high-definition images.



PDAF (Phase Detection Auto Focus)

Experience seamless and precise focusing with our PTZ camera's advanced AI Auto Focus. Whether for live events or VR production, Telycam's PDAF auto-focus empowers you with fast and accurate focus for premium-quality footage.



Versatile Output Options

The Explore offers diverse output options, including 4K60p resolution through NDI®HX3 and HDMI, connections. Users can choose the output method that best suits their production needs, ensuring flexibility and compatibility.



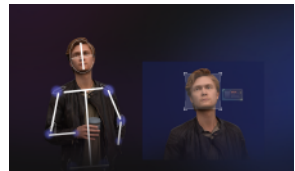
Robust Audio Capabilities

The Explore features 3.5mm line-in and Mini XLR with Phantom power, providing compatibility with various microphones and audio equipment.



Native AI-Based Auto-Tracking

The Explore features AI-based auto-tracking, automatically following subjects to enhance ease of use and capture the moments flawlessly.



FreeD Technology Integration

The Explore integrates FreeD technology for versatile shooting angles, ideal for both real-world and virtual applications.



MicroSD Card Slots

A MicroSD card slot for local recording. Record directly onto the camera for instant backup during network issues or quick access, ideal for prompt event review.



Specifications

Camera	Explore XE
Part Number	TLC-900-IP-20-4K(NDI)-L
Sensor	1 inch, 9MP UHD CMOS sensor
Zoom	20X optical zoom
Lens	f=9.79~186.5mm, F2.8~F4.5
Horizontal View Angle	71°(Wide)~4.05°(Tele)
Vertical Viewing Angle	39.6°~2.2°
Diagonal Viewing Angle	78.5°~4.6°
Minimum Working Distance	Wide: 15cm; Tele: 150cm
S/N Ratio	≥50dB

Video Format	3G-SDI: 1920*1080P60/59.94/50/30/29.97/25/24/23.98; 1920*1080I60/59.94/50; 1280*720P60/59.94/50/30/29.97/25
	HDMI2.0: 3840*2160P60/50/30/25/59.94/29.97/24/23.98; 1920*1080P60/50/30/25/59.94/29.97/24/23.98; 1920*1080I60/50/59.94; 1280*720P60/50/30/25/59.94/29.97
	NDI®HX3: Main Stream: 3840*2160P15~60; 1920*1080P15~60; 1280*720P15~60; 1024*576P15~60; Sub Stream: 640*360P15~30
	USB Type-C: NV12: 1920*1080P5; 1280*720P15; 1024*576P25; 800*448P30 YUYV: 1920*1080P5; 1280*720P15; 1024*576P25; 800*448P30 MJPG: 3840*2160P30; 1920*1080P60; 1280*720P60; 1024*576P60; 800*448P60 H264/H265: 3840*2160P30; 1920*1080P60; 1280*720P60; 1024*576P60; 800*448P60

Image Parameters

Noise Reduction	2D&3D
Minimum lux	0.5 lux(50 IRE Max AGC, 1/30, F1.8)
White Balance	Auto/Manual/ATW/Push/Indoor/Outdoor/Color Temperature
Exposure	Auto/Manual/Shutter Priority/Iris Priority/Brightness Priority
Anti-Flicker	OFF, 50Hz, 60Hz
Image Flip/Mirroring	Supported
Focus/Iris/Electronic-shutter	Auto/Manual
Gamma	Supported
Backlight Compensation	Supported

IP Streaming

Video Encoding	H.264/H.265
Bitrate Control	Variable bitrate(VBR), Constant bitrate(CBR)
Bitrate Range	1024Kbps~122800Kbps
Network Port Speed	1000M
Protocol	NDI®HX3, SRT, HTTP, HTTPS, RTSP, RTMP, RTMPS, ONVIF, VISCA over IP(TCP&UDP), VISCA, PELCO P/D, SSDP, FreeD, NTP, RTP Multicast, WebRTC, MPEG-TS

Pan/Tilt Movement

Preset	Remote controller: 10; Serial port: 256; Accuracy: 0.1°
Pan Rotation Angle	-176°~+176°
Tilt Rotation Angle	-90°~+90°
Pan Rotation Speed	0.1°~80°/s
Tilt Rotation Speed	0.1°~60°/s

I/O Interface

Control Port	RS232, RS485, USB, NDI®HX3
Video Port	NDI®HX3, HDMI 2.0, 3G-SDI, USB Type-C
Audio Port	Mini XLR(with phantom power), stereo 3.5mm line in
Tally	Supported
POE++	Supported
Daisy Chain	Supported

General

Input Voltage	DC12V, POE++(IEEE802.3bt)
Operating Temperature	-10℃~50℃
Operating Humidity	≤80%
Dimension (L×W×H)	232.5 mm×264mm×269mm
Net Weight	4.6kg(10.15LBS)
Color	Black/White

